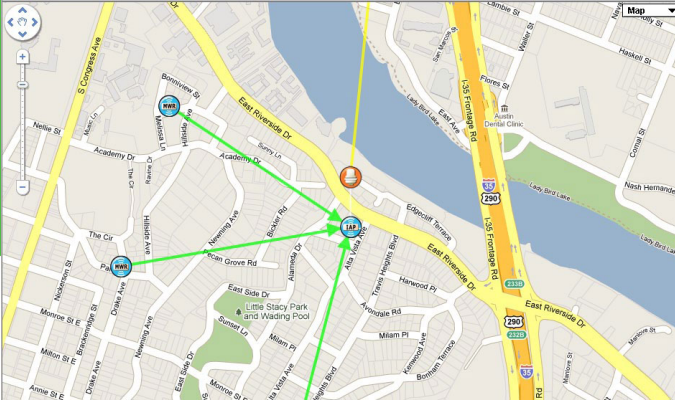


# WIRELESS MANAGER: PICTURE YOUR NETWORK



One simple and intuitive map-based view of the entire network maximizes uptime performance and efficiency.

Wireless Manager provides a single consolidated deployment and management application that delivers integrated network control while reducing training time and costs. The solution automatically incorporates complex relationships between network layers, and makes use of Google maps technology for the visualization of network devices and connectivity on both macro and micro levels. You can instantly view total network coverage and link performance data in real time from a single computer console. Key features include:

- **Template-Based Configuration** - Supports user-defined templates to configure devices thereby accelerating the deployment/change process and resulting in improved efficiencies and reduced errors.

- **Ultralight Thin Client** - Allows users to view the status of the network via an HTML page, which can be easily viewed on a smartphone.

- **Flexibility in Hardware Support** - Pre-configured to manage Cambium Networks' Orthogonal Point-to-Point and Canopy Point-to-Multipoint solutions, the system can also manage any SNMP-enabled device.

- **Unified Network Performance View** - Shows all network equipment and links between components with real-time polled performance information, alarms and alerts. Easily filters view by link status, equipment status, network equipment type and air standard.

- **Live Google-Map Visualization** - Enables visualization of the complete network with a live Google-map view that includes device search, local search, street view and device drag and drop.

- **Network and Element Graphical Dashboards** - Provides a consolidated view of the latest key information via network graphical dashboards.

- **Terrain Height Path Profiler** - Enables users to view the terrain height profile along any link path.

- **Auto Discovery** - Accelerates implementation of new equipment by enabling automatic discovery and provisioning via templates.

- **Activity Scheduling** - Automates and schedules tasks during preferred times.

Wireless Manager helps organizations manage their wireless networks for maximum reliability and uptime. Monitor and manage Orthogonal Point-to-Point, Canopy Point-to-Multipoint, and any other SNMP-enabled device from one live Google-map view. Real-time polled network performance metrics and alarms, displayed on a unified map, enable faster and more efficient response.

#### HARDWARE REQUIREMENTS

- 4 GB RAM
- Dual core processor, 2 GHz +
- Server-grade hardware recommended
- RAID storage recommended

#### SOFTWARE REQUIREMENTS

- Windows Server 2008+ or Red Hat Linux 5.5

# DESIGN AND DEPLOY WIRELESS

- **User Defined Groups** - Permits administrators to establish device groups based on custom definitions.
- **Detailed Audit Trails** - All user operations initiated from Wireless Manager are tracked.
- **Historical Analysis** - Logs performance and configuration parameters for each device so that plots over time can uncover trends affecting network reliability.
- **Customer Support Information Tool** - Collects information quickly and easily as needed for Cambium Networks support.
- **North-bound Interface** - Supports integration with third-party network management systems via SNMP. Wireless Manager supports all versions of SNMP.
- **High-Availability Architecture Support** - Provides support for dual-server failover mode.
- **High Scalability** - The Wireless Manager server scales to support up to 10,000 devices per server. It provides support for deployments requiring greater than 10,000 nodes by using a high-tier/low-tier distributed architecture.
- **System Reports** - A variety of system level reports are available as is the ability to create customized reports.
- **Centralized Software Updates** - Enables users to deploy firmware updates to Cambium Networks' devices.

CAMBIUM NETWORKS' Orthogon and Canopy solutions are proven leaders in the wireless broadband industry. We deliver innovative data, voice and video connectivity solutions that enable communications virtually anywhere in the world.

Award winning Orthogon Point-to-Point solutions operate in licensed, unlicensed and defined use frequency bands. Solutions include FIPS 140-2 certification for the U.S. Federal market.

Flexible Canopy Point-to-Multipoint solutions operate in the licensed and unlicensed frequency bands to provide reliable, secure, cost-effective access networks.

